

KEY PRODUCT FEATURES

- ❑ Easy-to-use GUI cockpit for PowerDRC/LVS
- ❑ Configuring of DRC and LVS sessions
- ❑ Run progress monitoring
- ❑ Comprehensive reports
- ❑ Interactive debugging of violations
- ❑ Rich interoperability

Overview

POLYTEDA's PowerRDE provides the run and debug environment for PowerDRC with an easy-to-use GUI. It allows violation handling capabilities like assigning different status, color changing, grouping, filtering by area and location, sorting by number or status. Rich interoperability allows integration of a 3rd party layout viewer/editor with PowerRDE and highlighting of violations.

GUI Cockpit

POLYTEDA's PowerRDE serves as the starting point of PowerDRC/LVS sessions, from where the user can pick a design layout to verify, configure the verification parameters, invoke PowerDRC/LVS engine, monitor it running, review run results, and analyze the found violations. POLYTEDA team did their best to make this control center user-friendly, convenient, and efficient.

Run configuring

PowerRDE allows fine-tuning of DRC, LVS, XOR, QuickDiff, Fill layers generation runs via GUI. It shows the currently chosen configuration, checks validity of the entered values, tracks compatibility of the chosen modes, and allows to save/restore configurations. PowerRDE gives access to the full range of RCF parameters that control operation of the product.

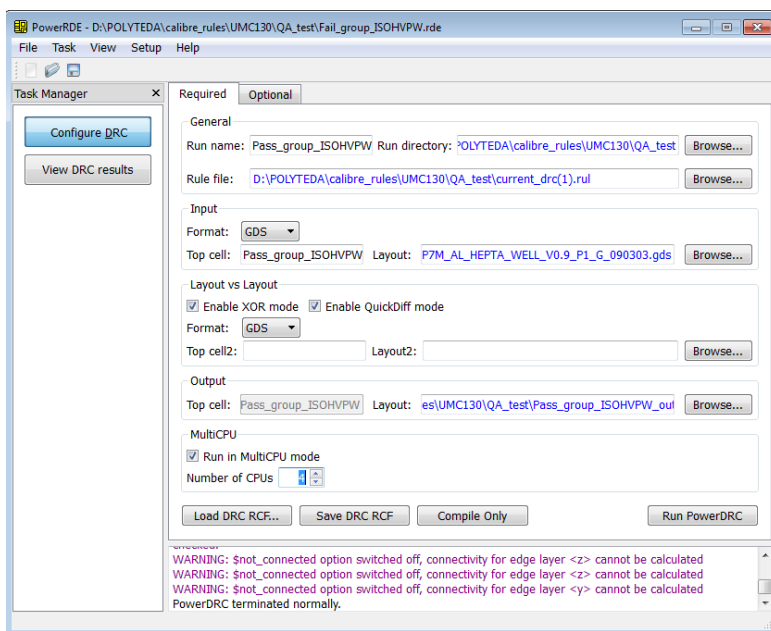


Fig 1. Setting required parameters for a DRC run

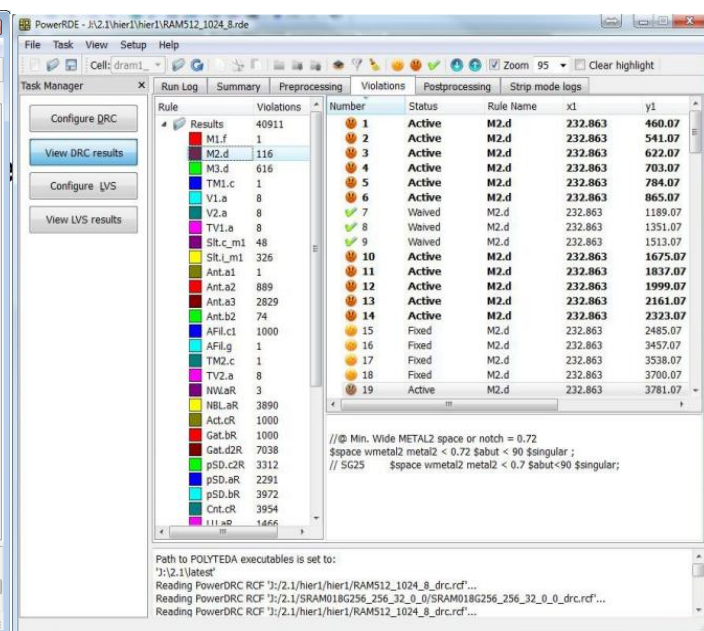


Fig 2. Sorting of the found violation

SALES CONTACTS

North America

TekStart LLC
60 Atlantic Ave. Suite 200
Toronto, Canada ON M6K 1X9
Tel: +1 905 634-6688
sales@polyteda.com

Europe

TekStart LLC
A. Brier, Ch. Agricole Perdiguer
35000 Rennes, France
Tel: +33 09 62 38 47 13

Israel

Miki Granski
miki@safer-foundation-tech.com

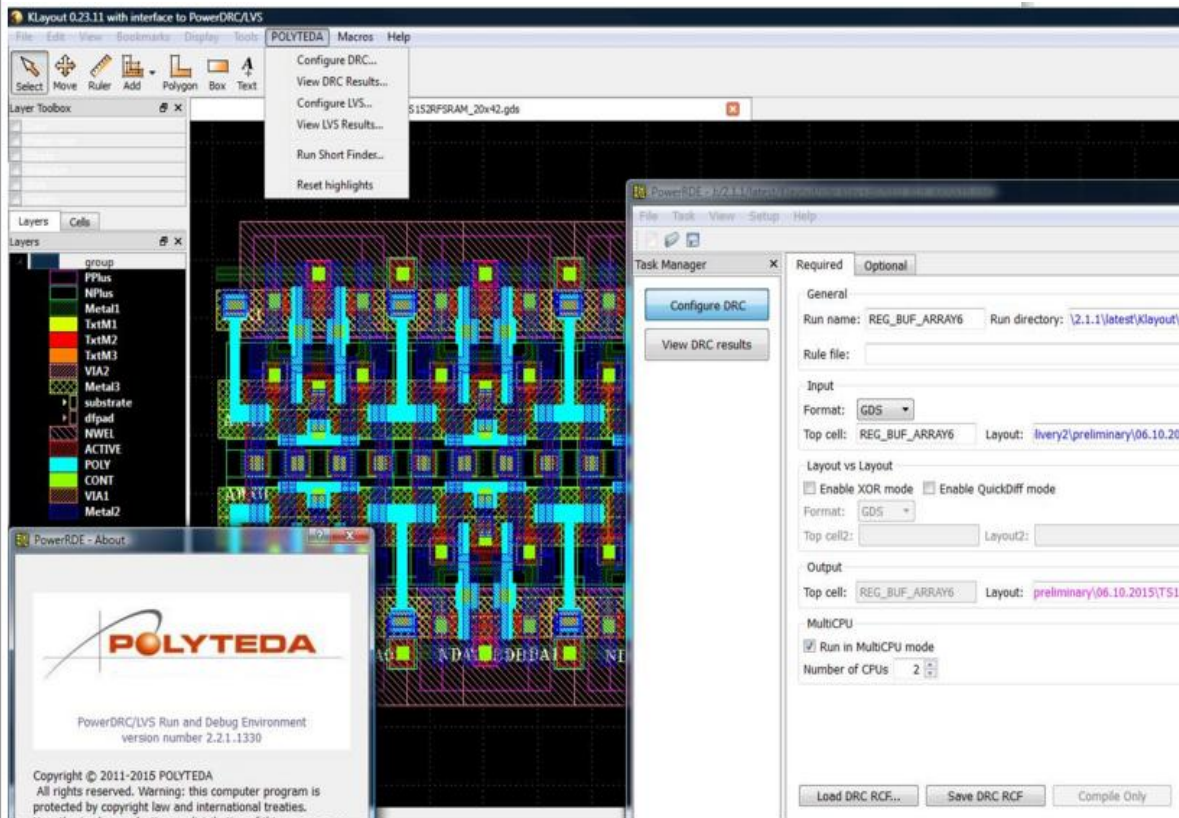
India

Cadre Design Systems
Dehli, India
Tel: +91-9311290546
sales@cadredesign.com.in

ROW

POLYTEDA Ukraine LLC
Kiev 04136, Ukraine
1-3, Pymnichno-Syretska st.
Grudanov Alexander
Tel: +380-44-239-99-55

grudanov@polyteda.com



Viewing run results and debugging

Fig 3. PowerRDE integration with KLayout

For DRC, PowerRDE lets you browse:

- DRC run log and summary report
- Multi-CPU mode statistics
- DRC violations
- XOR discrepancies
- Generated fill layers

The found violations or discrepancies if any may be highlighted in the layout editor of the user's choice (Fig.2).

For LVS, PowerRDE lets you browse:

- LVS run log and summary report
- Comparison statistics in detail
- Floating labels
- Open nets
- Multi-label nets
- Malformed devices
- Shorted nets

The found errors if any may be highlighted in the layout editor and cross-probed in

schematic editor of the user's choice.

Rich interoperability

Through PowerRDE PowerDRC/LVS has interoperability with such widely-used design environments as:

- Cadence® Virtuoso® (CDBA and OpenAccess)
- Synopsys Laker™
- AWR Analog Office®
- KLayout (GDSII and OASIS)
- Symica DE – native and OpenAccess

System Requirements

Supported platforms:

- Linux 64 bit RedHat/CentOS 6+
- Windows 7 32/64 bit

Copyright © 2017 POLYTEDA Ukraine LLC. All rights reserved. POLYTEDA and POLYTEDA logo are trademarks of POLYTEDA Ukraine LLC.

www.polyteda.com

